



# GLANDS AND THE TONGUE

Dentalelle Tutoring

# PALPATION

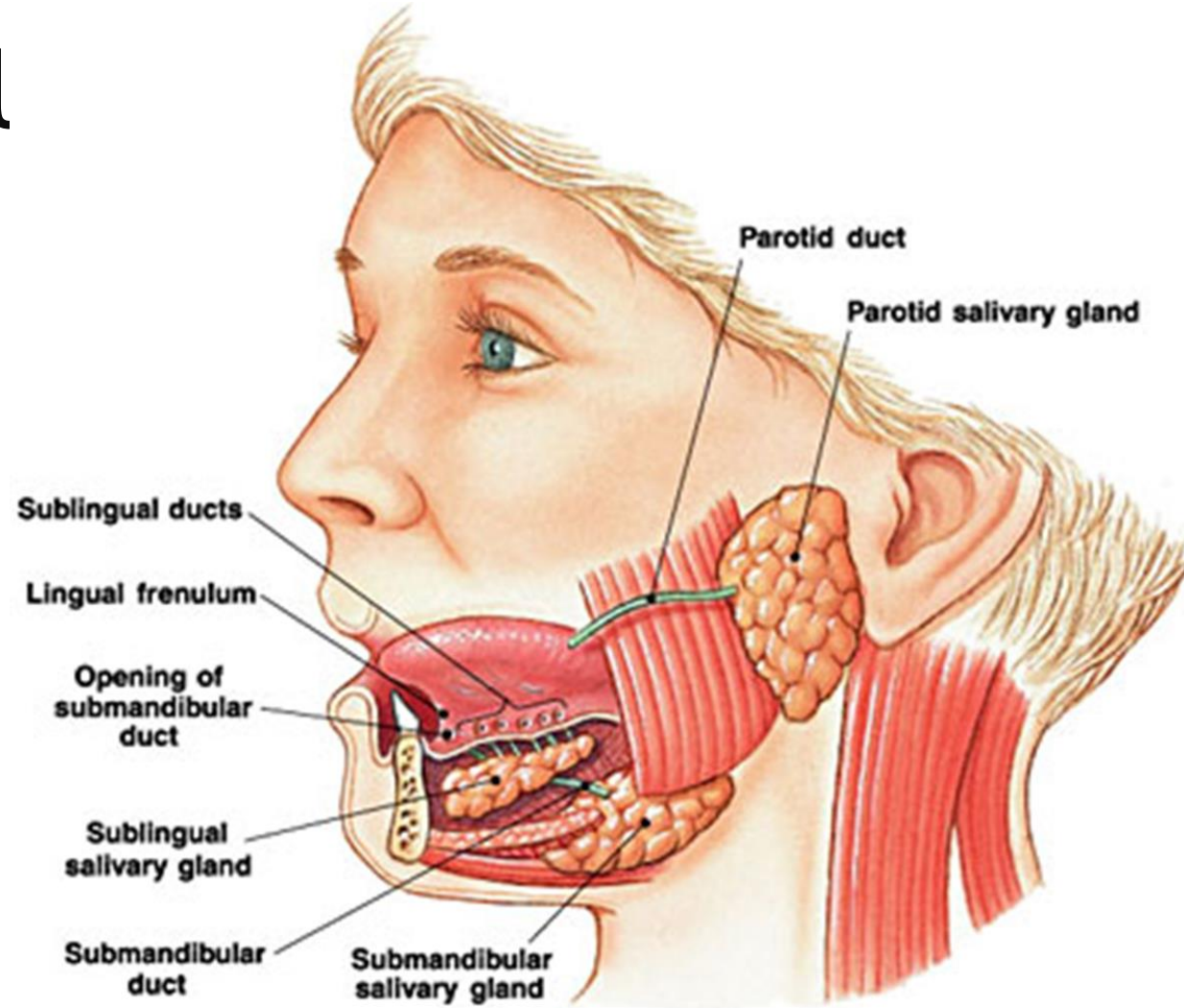
**Digital** – single finger

**Bidigital** – finger and thumb of the same hand

**Bimanual** – use of finger or fingers and thumb from each hand

**Bilateral** – two hands used at the same time

# GLANDS AND DU



# INFO

**Sublingual caruncle** – small rounded projection at the base of the lingual frenum which houses **Wharton's duct** from the submandibular salivary gland

**Sublingual folds** – two oblique elevations found radiating laterally away from the lingual frenum on either side of the caruncle which house the ducts from the sublingual salivary gland

**Lingual frenum** – muscle attachment from the ventral surface of the tongue to the floor of the mouth. This attachment varies in length from person to person.

# THE TONGUE

